

REPORT TO HEAD OF
TRANSPORT AND
STRATEGIC
INFRASTRUCTURE

1 August 2016

PROPOSED STOPPING UP OF HIGHWAY AT FORMER SHEFFIELD CITY
AIRPORT, EUROPA LINK, DARNALL, SHEFFIELD.

1.0 PURPOSE

- 1.1 To seek authority to support the proposed Stopping-Up Order required for part of Europa Link, and diversion of parts of footpaths numbered SHE/403, SHE/406 and upgrade (to bridleway) part of cycle track SHE/CT5.

2.0 BACKGROUND

- 2.1 An application to make a Highways Stopping-Up Order, under Section 247 of the Town and Country Planning Act 1990, has been made to the Department for Transport National Transport Casework Team (N.T.C.T.).
- 2.2 N.T.C.T has contacted the City Council, as a statutory consultee, in respect of the proposed closure referred to below.
- 2.3 The applicant is seeking the closure of part of the verge of Europa Link and the diversion of part of footpaths numbered SHE/403 and SHE/406 and upgrade (to bridleway) part of cycle track SHE/CT5, Darnall, Sheffield. A planning application has been made, numbered 15/01262/OUT, Development of Advanced Manufacturing and Research Centre Campus (AMRC2).
- 2.4 In order to facilitate the approved development, it is necessary to permanently stop up the area of highway shown coloured yellow and divert the footpaths and upgrade parts of the cycle track shown as blue lines and broken red lines respectively on the plan included as Appendix A.

3.0 CONSULTATIONS

- 3.1 In this particular case, it is not the role of the City Council to consult the statutory organisations and other relevant bodies. However, as part of the process of making the application to N.T.C.T, the applicant should have consulted the usual sources and been in discussion with affected parties concerning the resiting and protection of their equipment. At the time of writing this report the Council had not received notification of any objections.

4.0 LEGAL IMPLICATIONS

- 4.1 The Director of Legal Services has been consulted and has advised that, assuming the areas of highway need to be stopped up to facilitate the approved development, it would be appropriate to process the closure using powers contained within the Town & Country Planning Act 1990, Section 247.

5.0 HIGHWAY IMPLICATIONS

- 5.1 Europa Link is a classified all-purpose adopted highway. The section proposed for closure forms part of a verge and will not affect the operation of the highway.
- 5.2 New bridleway and footpath connections will replace the lengths of footpaths and cycle tracks to be closed, shown on the plan attached as Appendix B.
- 5.3 In view of the replacements which the developer is committed to by the Order, the loss of these sections of highway therefore should not affect the public's enjoyment of this area. The closures are necessary for the approved development and will have no detrimental effect on the surrounding highway network and its users.
- 5.4 The Council is satisfied that it is necessary to close/divert the existing highways as shown on the plan attached as Appendix A

6.0 EQUAL OPPORTUNITY IMPLICATIONS

- 6.1 No particular equal opportunity implications arise from the proposal in this report.

7.0 ENVIRONMENTAL IMPLICATIONS

- 7.1 No particular environmental implications arise from the proposal in this report.

8.0 FINANCIAL IMPLICATIONS

- 8.1 The subject piece of all-purpose highway will be de-accrued from the Streets Ahead Contract. Overall the effect on the Highway Maintenance Revenue Budget is considered to be negligible.
- 8.2 All costs associated with, and arising from, the application and consequent works on site will be met by the applicant.

9.0 CONCLUSION

- 9.1 Based on the above information, I have no objections to the proposed stopping up of part Europa Link, and the diversion of footpaths SHE/403 and SHE/406, and the closure of parts of cycle track SHE/CT5 to be replaced by new bridleway as shown on the plans included as Appendices A and B.

10.0 RECOMMENDATIONS

- 10.1 No objections are raised to the proposed stopping up of part of Europa Link and the stopping up of part Europa Link, and the diversion of footpaths SHE/403 and SHE/406, and the closure of parts of cycle track SHE/CT5 to be replaced by new bridleway as shown on the plans included as Appendices A and B., subject to satisfactory arrangements being made with the Statutory Undertakers with regards to such of their mains and services that may be affected.
- 10.2 Authorises the Director of Legal Services to notify N.T.C.T. of this decision.

Mark Reeder

Engineer
Highway Records.

1 August 2016

REPORT APPROVED BY HEAD OF TRANSPORT AND STRATEGIC
INFRASTRUCTURE.

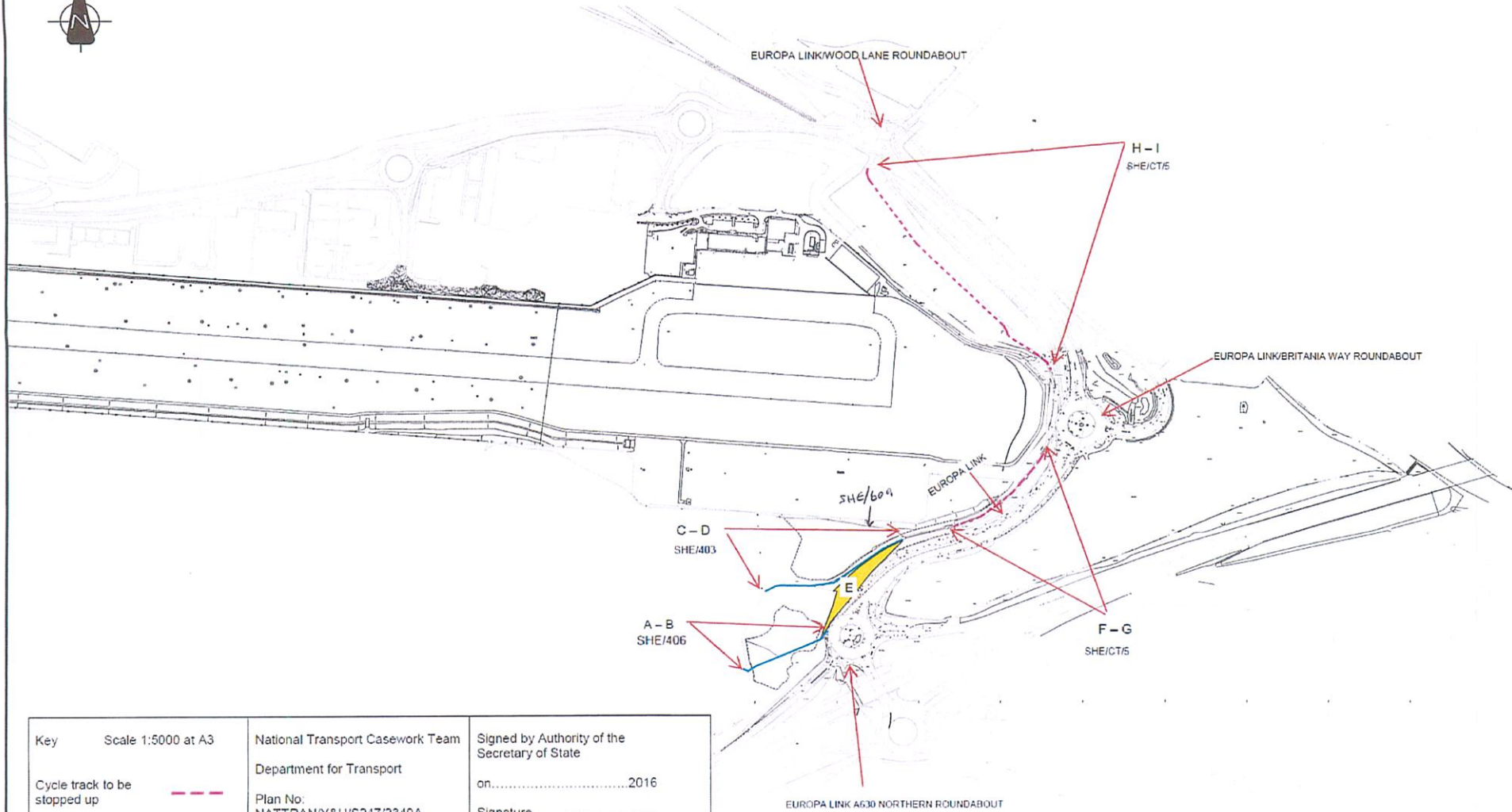
Signed

Date

1 August 2016 .

HIGHWAY AT DARNALL IN THE CITY OF SHEFFIELD

APPENDIX A

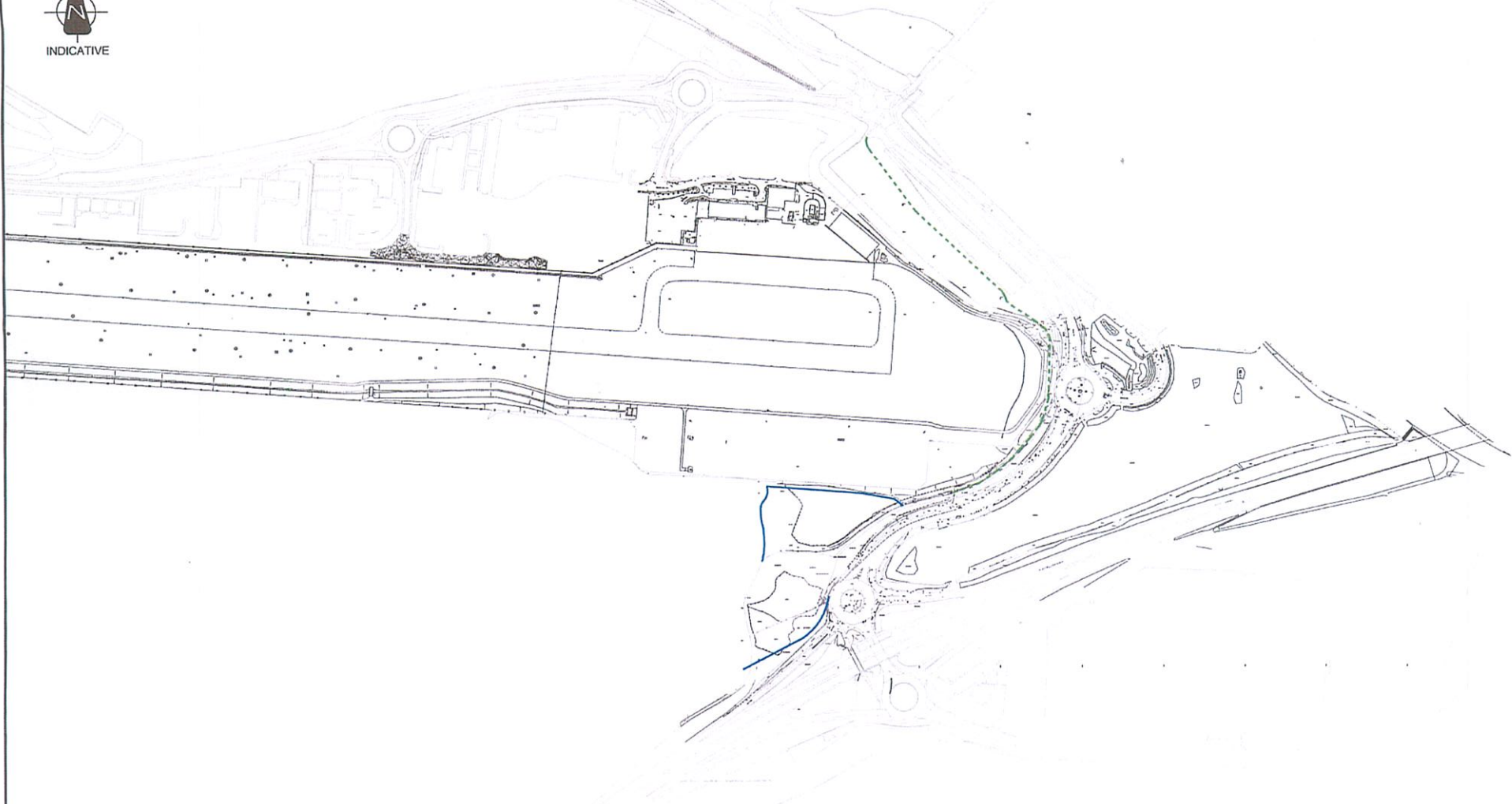


Key	Scale 1:5000 at A3	National Transport Casework Team	Signed by Authority of the Secretary of State
		Department for Transport	on.....2016
Cycle track to be stopped up		Plan No: NATTRAN/Y&H/S247/2349A	Signature.....
Footpath to be stopped up			
All purpose highway to be stopped up		SITE PLAN 1	DAVE CANDLISH An Official in the National Transport Casework Team Department for Transport


HIGHWAY AT DARNALL IN THE CITY OF SHEFFIELD




INDICATIVE



Key Scale 1:5000 at A3

New bridleway to be provided 

New footpath to be provided 

National Transport Casework Team

Department for Transport

Plan No:
NATTRAN/Y&H/S247/2349B

SITE PLAN 2

Signed by Authority of the Secretary of State

on.....2016

Signature.....

DAVE CANDLISH
An Official in the
National Transport Casework Team
Department for Transport