

Alternative Provision Directory

2016-2017

14-25 Progressions Team.
Lifelong Learning, Skills
and Communities



What is Alternative Provision?

Alternative Provision is education arranged by Local Authorities for learners who, because of exclusion, illness or other reasons, would not otherwise receive suitable education; education arranged by schools for learners on a fixed period exclusion; and learners being directed by schools to off-site provision to improve their behavior (DFE 2013).

Sheffield takes a citywide approach to delivering alternative provision and vocational pathways linked to local industry sectors in Sheffield.

Key features of all provision are:

- Delivery in partnership with multi-agency services
- A named key worker
- A SMART Individual Learning Plan focused on next steps
- A personalised curriculum appropriate to learner need, agreed with school prior to start
- A personalised timetable ensuring a broad and balanced curriculum

Sheffield has a strong and well recognised network of Alternative Provision across the city who can offer vocational based provision to learners.

14-25 Progressions Team

The 14-25 Progressions Team staff work with Sheffield schools in matching students with alternative provision from within our Alternative Provision Network. The team are able to meet with learners, school staff and parent/carers to ensure that the learners are given information and guidance relating to the provision on offer and progression routes post-16.

The officers work closely with a variety of approved providers and multi-agency workers to support the young people, monitor attendance and achievements and help solve any day-to-day problems that may arise. The team also monitor contractual compliance and Quality Assurance of provision across the network.

What about travel?

Young people must travel independently to their placement or be supported by their school. Visits will take place before the courses start so you can find out where the training takes place and how you are going to get there.

What about support?

School will nominate a member of staff who will work with the course tutors to make sure the young people are happy, safe and progressing well on the course.

For further information on the AP programme please contact the 14-25 Progressions Team on 229 6185 or email ECT@sheffield.gov.uk.

Who's who?

Recent staff changes at the Progressions Team have resulted in alterations to roles and responsibilities, as outlined below

Lindsay Smith 229 6176	Malcolm Wigby 229 6176	Paula Clark 229 6157	Rachael Winder 2296133	Helen Price
Aldine House	All Saints	Bradfield	Post-16 SEND	Post-16 Care Leavers
High Storrs	Becton	Bents Green		
King Egbert	Birley	Chaucer		
King Edward VII	CME	Ecclesfield		
SIC	Handsworth Grange	Firth Park		
Silverdale	Heritage Park School	Fir vale		
Traveller Education	Holgate Meadows	Forge Valley		
	Outwood (City)	Hinde House		
	Notre Dame	Meadowhead		
	Park Academy	Newfield		
	Springs Academy	Parkwood		
	Stocksbridge	Tapton		
	Westfield	Yewlands		
	Elective Home Ed			

Placement Options:

From academic year 2016-17 the 14-25 Progressions Team will offer two new programmes detailed below. Details of which providers can offer these programmes is included on the following pages.

Progression Programmes (Key Stage 4)

These programmes have previously been known as the **Direct Programme** (up to 2 year courses aiming to achieve a GCSE equivalent qualification in a vocational area, see separate directory) and the **Flexible Programme** (roll on, roll off courses).

Delivered by the Alternative Provision Network Providers, these courses are suitable for learners who are at risk of disengaging from the mainstream school curriculum and becoming NEET. Placements are part time and last up to 2 years. Schools can work with a Placement Support Officer from the 14-25 Progressions Team to match learners to placements throughout the school year. This programme can be tailored to meet the needs of individual learners and schools and more flexible packages can be negotiated.

Target group - Key Stage 4 (and, in exceptional circumstances, Y9) learners who would benefit from usually one or two days off site, the remainder of the time typically spent in school.

Programme duration: Ongoing (minimum half term blocks). Some courses offer GCSE equivalent qualifications accessed across 2 years.

Support: Support needs must be met by referring school.

Re-engagement Programmes (Key Stage 3 & 4)

Delivered by the Alternative Provision Network Providers, these courses are suitable for learners demonstrating exclusion risk factors that despite the schools usual multi agency strategies are not showing improvement. Placements are part time (1-2 days per week) and short term (**up to a maximum of one term**).

Access: School refer to the 14-25 Progressions Team

Support: Support needs must be met by referring school.

New Arrival Support (Key Stage 4)

A programme of full-time equivalent provision for young people newly arrived in the city, who require extended induction support before attending a mainstream school. The course is aimed primarily at Y11 students.

Access: Referral via Fair Access arrangements and through the Children Missing Education Team.

Re-engagement Programme

The following providers have indicated that they would be able to offer programmes on our KS3 and KS4 Re-engagement strand as well as their usual offer .

Provision type	M T W T F				In Reach	Subject Area										PSD						
	M	T	W	T		F	Outdoors	Arts	Work skills					Key skills								
									Animal Care, Horticulture, Angling	Art and Design, Horticulture, Agriculture	Construction, Media Skills	Performing Arts	Health and Social Care, Business and Finance	Retail, Engineering, Mechanics	Hair and Beauty	Sports and Fitness	Uniformed Services	ESOL (speakers of other languages)	English & Maths	GCSE options	Personal and Social Development	
A Mind Apart	•	•	•	•	•	Y																•
CYP - South Yorks Boys and Girls					•																	•
Endeavour Training					•	Y																•
Heeley City Farm	•	•						•														•
Manor & Castle Development Trust	•	•	•	•																		•
Musical Works					•			•														•
NACRO					•																	•
Onboard skatepark					•																	•
Heeley Development Trust (Recycle & S	•	•	•	•																		•
Sheffield Sharks					•																	•
Syreeta's Hair and Makeup					•																	•
Whirlow Hall Farm	•				•																	•
YASY	•				•																	•

Directory contents and days on which provision operates

Providers offer provision across different days. The current days of provision are listed below, however these are subject to change by providers. Please contact the Progressions Team on 2296185 to enquire about availability.

	Page	Progressions Programme (Previously AP Flexible or Direct)					KS3 & 4 Re-engagement Programme 1 term only - minimum group sizes indicated below					Min no?	Max no?
		Mon	Tues	Weds	Thur	Fri	Mon	Tues	Weds	Thur	Fri		
A Mind Apart	7		•	•	•	•	•	•	•	•	•	4	
Boys and Girls Clubs South Yorks (CYP)	8	•	•		•	•						5	
Education Through Angling	9		•	•	•								
Endeavour Training	10	•	•	•	•					•		10	12
GTA Mechanics	11		•		•	•							
Heeley City Farm	12-13	•	•	•			•	•				4	8
Heeley Development Trust (SMP, Recycle and Heeley People's Park)	14-16	•	•	•			•	•	•			5	
In2Change	17	•	•	•	•	•							
Manor & Castle Development Trust	18	•	•	•	•	•	•	•	•	•			6
Musical Works	19		•		•			•	•			5	
NACRO	20					•				•			
NotSchool.net	21	•	•	•	•	•							
Onboard Skatepark	22	•	•		•	•	•	•	•	•		6	9
Sheffield Sharks	23		•		•			•					
Sheaf Training Catering	24				•								
Sheaf Training Childcare	25		•		•								
Sheaf Training Horticulture	26		•										
Sheffield Wednesday	27		•	•	•	•							
Syreeta's Hair and Beauty Academy	28		•		•		•	•				6	10
SYTG	29-31	•	•	•	•								
Whirlow Hall Farm	32	•	•	•		•	•	•	•	•		4	6
YASY	33-35	•	•	•	•	•	•			•		6	10



Performing Arts

Developing Skills through Performing Arts

What can you expect to do?

- Be taught by professional staff to develop your confidence and self-esteem.
- Learn about body language and how to use it to improve your chances in interviews and in other situations.
- Develop your presentation skills and be inspired to achieve anything you want to achieve.
- Develop leadership skills within a chosen Art Form.
- Learn a range of performing arts and enterprise skills.
- Learn to develop performances or/and organise events
- Other skills like set design, lyric writing, costume design, stage management, events management and general life skills.
- Work on your Maths and English to improve your progression opportunities.

We will give you our best so that you can give us yours.

What workshops/classes will you take part in?

You can expect to take part in a range of fun relaxed activities, classes and sessions. If you enjoy a particular area we will make sure you can progress in it.

Below is a list of some of the areas we may cover:

- Personal and social development
- English and Maths
- Dance
- Acting
- Set design
- Costume design
- Song writing / rapping
- Singing
- Enterprise skills
- Shakespeare

What qualifications do we offer?

- Award in the Arts (E3, L1, L2 and L3)
- Social Enterprise Qualification (L1 and L2)
- Functional Skills: Maths, English and ICT. (E3, L1, L2)

The sessions are planned around your interests so if there is something we have missed that interests you, you can let us know and we will do our best to help you explore it!

Address:

A Mind Apart, 57 Burton Street, Hillsborough, Sheffield, S6 2HH



Boys and Girls Clubs South Yorkshire Sports

What does the course cover?

- Boxing
- Football
- Basketball
- Volleyball
- Table Tennis

What can I expect to do?

You will have ongoing fitness assessments and an individual training programme.

You will also try individual and team tasks and develop problem solving, working together and life skills.

There are also opportunities to develop numeracy and literacy skills.

Where is it?

Address: SY & Hallamshire CYP,
393 Langsett Road,
Hillsborough,
Sheffield,
S6 2J



Education Through Angling

What does the course cover?

- Use and set up fishing equipment
- Catch, identify, return safely and record all species of fish
- Record catch rates and fish populations
- Remove fish scales and measure fish
- Identifying other plants and animals
- Collect invertebrate samples for identification and use in water quality survey
- Fish biology

What can I expect to do?

You will work in groups of no more than 8 in a fun, friendly and safe way.

You will be given all the help you need to complete written and practical work.

Where is it?:

Education Through Angling
Abbeydale Industrial Hamlet
Abbeydale Road South
Sheffield
S7 2QW



Full Time Alternative Provision

What does the course cover?

- Our **full time provision** is aimed at learners who are new to the city, new to the country or are struggling in a mainstream setting.
- A broad accredited curriculum that meets the needs of learners through work on **literacy, numeracy**, healthy living, personal and social development.
- **Wrap around care** supported by close relationships with parents / carers
- All learners are entered for Functional Maths and English at E1 to L2 as appropriate.
- **We offer GCSEs** in Maths, English and a choice of MFL.
- We also offer **BTEC Science and BTEC Sport and Active Leisure**.
- One day per week with another Alternative Provider as a 'satellite placement' to broaden vocational skills.

What can I expect to do?

- Learners will learn through a range of small group work and enrichment activities.
- Improving literacy and numeracy skills as well as building characteristics such as ability to work as part of a team or solve problems.
- Learners are encouraged to work towards accredited outcomes using the ASDAN stable of Awards and qualifications including Literacy and Numeracy.
- Learners are supported to apply for post 16 provision at Sheffield College, 6th Form or one of the other wider opportunities available across the city along with transition support.

Where is it?:

Endeavour Education Centre
600 Earl Marshall Road
Sheffield
S4 8FB





Doncaster GTA Mechanics

What does the course cover?

- Spark Ignition System Maintenance
- Vehicle Exhaust Systems Components and Maintenance
- Vehicle Braking Systems Components and Maintenance
- Health and Safety practices in Vehicle Maintenance
- IMIAL Level 1 Diploma in Vehicle Maintenance (QCF)

What can I expect to do?

Work in a garage with access to a range of vehicles, learning practical vehicle maintenance skills.

Learn in our classrooms to develop theory skills around car maintenance skills.

Where is it?:

Unit 3A Parkway Close,
Parkway,
Sheffield,
S9 4WJ

Doncaster, Rotherham and District Motor Trades GTA Ltd have been trading in Doncaster and Sheffield since 1972 and has grown over the years to become one of, if not the largest specialist Transport, Logistics, Business Administration and Motor Trades Training Association in South Yorkshire, with Training Centres in Doncaster and Sheffield





Animal Care

What does the course cover?

- Feeding
- Cleaning
- Mucking out
- Grooming
- Exercising
- Moving animals around the farm

What can I expect to do?

Learn practical animal care skills.

You will work in small groups and be supported to complete any written work.

Where is it?:

Heeley City Farm
Richards Road
Sheffield
S2 3DT





Horticulture

What does the course cover?

- Planting
- Potting
- Weeding
- Watering
- Pruning
- Occasional fencing and paving projects
- Customer service in the garden centre

What can I expect to do?

You will be responsible for maintaining a clean, safe, healthy environment around the farm.

You will be working in the gardens, poly-tunnels and garden centre.

You will work in a small group and be supported to complete any written work.

Where is it?:

Heeley City Farm
Richards Road
Sheffield
S2 3DT





Horticulture

At HPP (Heeley People's Park) young people have the opportunity to expand their skills and gain experience and qualifications in horticulture through land-based activities. We encourage learners to express their creativity and explore a whole new world of opportunities. Learners develop essential industry skills, study specialist parks and have the chance to undertake exciting and challenging projects.

What can I expect to do?

This course is delivered with a strong emphasis on practical activity. Learners will undertake a mixture of practical sessions, demonstrations and class-based learning in order to:

- Develop the practical and technical skills that employers are looking for.
- Gain qualifications that will enable them to progress to college courses in horticulture, garden design or foundation learning.
- Gain valuable work experience opening up a range of career options in a variety of industry settings.

What does the course cover?

Personal and Social Development, Maths and English

Functional Skills in Maths, English and ICT

ASDAN Wider Key Skills at Level 1 and 2

Progression:

The dedicated team contribute to the course content, ensuring learners develop the skills necessary for a career in horticulture or to progress towards additional qualifications. Every young person is encouraged to work towards functional skills qualifications in Maths and English.

Re-engagement:

Focus on skills such as punctuality, attendance, concentration and self-esteem. We will reflect on difficulties encountered at school. An exit strategy will be set in conjunction with schools and learners wishes and needs.

Where is it?

Heeley Development Trust

(Heeley People's Park, ReCycle & Sheffield Media Productions)

Ash Tree Yard

62-68 Thirlwell Road

Sheffield,

S8 9TF



Art and Media Skills

What does the course cover?

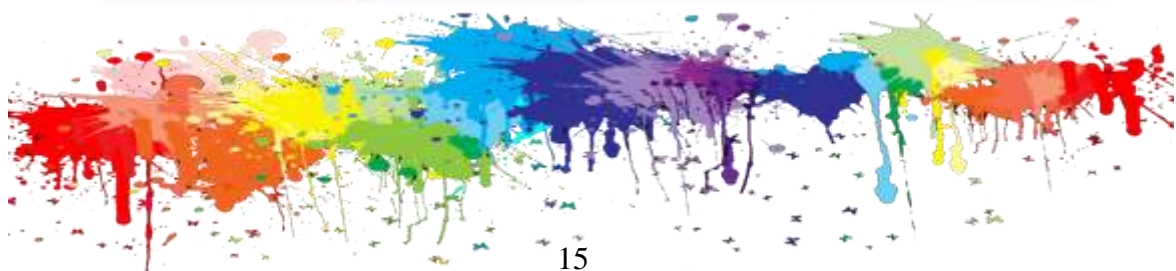
- Art
- Design
- Multimedia skills
- IT skills
- Developing life skills
- Developing listening skills
- Building self-esteem and self confidence
- Team work
- Literacy and Numeracy

What can I expect to do?

You will work in a small group with 1:1 support and have specialist support to gain ASDAN Personal and Social Development, OCN Functional Skills in English, Maths and ICT and Wider Key Skills at Level 1 or 2.

Where is it?

Heeley Development Trust
(Heeley People's Park, ReCycle & Sheffield Media Productions)
Ashtree Yard
62-68 Thirlwell Road
Sheffield
S8 9TF





Bike Mechanics

What does the course cover?

- Basic repairs to brakes and gears
- Assessing bikes for work to be carried out
- Clean and prepare bikes for use
- Repair punctures
- Working with bearings
- ASDAN Qualifications

What can I expect to do?

You will work in small groups on practical bike maintenance activities. Students learn a combination of bicycle mechanics, functional skills and personal and social development.

You will have the opportunity to develop your customer service skills in our shop and work with adult volunteers.

Students can fix their own bikes and fit parts from our workshop in the afternoons if they complete all the work given to them in the morning.

Where is it?

Heeley Development Trust
(Heeley People's Park, ReCycle & Sheffield Media Productions)
Ash Tree Yard
62-68 Thirlwell Road
Sheffield,
S8 9TF





In2Change Personal & Social Development

What does the course cover?

- Life skills
- Employability
- Nail Art (Monday and Wednesday)
- Hair extensions
- Customer Service
- Tasters in Hospitality, Fashion, Nail Art, Sport and Construction
- Crime and its consequences

What can I expect to do?

Students will work to an NOCN accredited entry level 3 change education qualification.

Sensible clothing appropriate for relevant vocational area - No low cut tops or vests, no short skirts or shorts, no excessive use of jewellery, no open toed footwear.

Entry Requirements: None

Time of Sessions: 9.30 - 3.30

Organisation's code of conduct explained and displayed throughout centre.

You may bring a packed lunch, or use local shops.

Induction to the course, premises and housekeeping given on day one.

In2Change staff have expertise in working with young people that are involved with or at risk of involvement with the criminal justice system.

Where is it?

Rutland Hall, Hicks Street, Neepsend, Sheffield, S3 8BL. Admin@i2c.org.uk

0114 253 6077

Public Transport - bus no 53 from Hicks Street.



Signpost Project

Personal and Social Development

What does the course cover?

- We focus on positive achievements and communicate these regularly with school.
Staff work with students on curriculum course work and can support learners with maths and English work provided by the school.
- Time each day for reflection and resolution if things don't go according to plan.
- Giving learners support and stability to be able to overcome their issues and feel comfortable about re-engaging with school life.
- vocational/practical upskilling and activities through our community garden and workshop projects.

What can I expect to do?

We work with the student and school to decide the most appropriate way forward for each student's learning, development and achievement, including re-integration into school. Once this is agreed each student works with their key staff to develop their ILP and weekly timetable, this includes daily curriculum course work sessions. We will liaise with the school to collect this work and to ensure each student has the best opportunities to succeed.

Where is it?

Steel Inn Young Peoples Resource Centre,
135 Harborough Avenue,
Manor
Sheffield
S2 1QR.





Music

What does the course cover?

- Lessons on drums, guitar, keyboard, bass, vocals
- Song writing / MC skills
- Lyric writing
- Music Production / Beat Production for all styles of music
- Studio engineering (How to use all the studio equipment)
- Recording (Bands, solo artists)
- Visits to other studios, venues and colleges

What can I expect to do?

You will work on your own and alongside others, creating new music and developing new skills, choosing which areas / instruments you would like to work on each day.

Our Tutors are professional musicians and recording artists and will share their expertise experiences with you.

Where is it?

Star Studios
Carver House
Carver Street
S1 4FS

Tel: 0114 275 0423





50
YEARS
1966-2016

Catering

What does the course cover?

- Industry basics
- Food Preparation
- Hygiene guidelines & procedures
- Food cooking
- Customer service
- Serving food and drink



Motor Vehicle

What does the course cover?

- Industry Basics
- Wheel replacement
- Brake fitting and repair
- Health and Safety
- Tool recognition and use



Sports and Active Leisure

What does the course cover?

- Level 1 & 2 Award and certificate City and Guilds in Sport and Leisure
- Skills, tactics and techniques in a wide range of individual and team sports
- General health, fitness and nutrition
- Muscular skeletal and cardio respiratory systems



What can I expect to do?

Gain a recognised qualification.
Real work experience in our fully equipped kitchen, garage and gym.
Develop your vocational skills further.
Improve your Maths and English.
Gain on the job practical experience.



Key Skills – online learning

Please note that whilst Not School is Alternative Provision – referrals and funding should be arranged directly with Peter Daneliuk, programme co-ordinator on 07932 790782.

What does the course cover?

- Improved levels of literacy and numeracy
- Improved self-confidence and self-esteem
- Developed ICT skills and gained QCF awards
- Potential candidates are chronic school refusers, school phobics, severely disaffected students and students with long term health problems.
- The Notschool.net project offers a 24/7 on line learning resource to re-engage young people back into learning

What can I expect to do?

Each student has online access to a personal mentor, the Sheffield central project team and subject experts who **'direct, assist and encourage'** their learning in a secure environment.

A **'Personalised Blended Learning Programme'** is designed for each student with safeguarding visits, home education and pastoral support provided by the Sheffield Notschool.net local team.

90% of pupils involved in the project have moved on to college, training or employment at the end of the project at age 16.

Where is it?

All Notschool students are provided with Internet access in their home, to facilitate 24/7 access to the Notschool learning community.





Joinery and Skate Boarding/ BMX

What does the course cover?

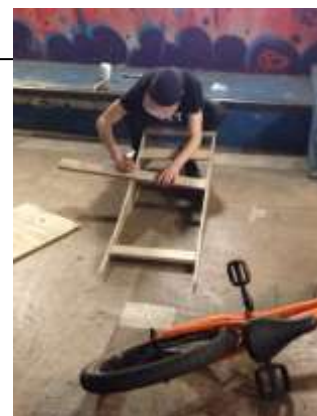
- Joinery- developing wood work skills, building mobile skate ramps and repairing indoor ramps
- The use of hand held tools
- Skate park tutoring- how to ride indoor skate parks, learning tricks, how to use a variety of obstacles, developing and encouraging new skills.
- Customer services
- Employability skills

What can I expect to do?

- Be welcomed into an exciting urban environment with positive and encouraging staff
- Pupils are offered learning opportunities; where they can couple problem solving/ joinery, complemented by engaging in sports, in order to increase motivation and build self-confidence:
- Students will work in small groups learning to use a variety of hand held tools.
- We will also build objects that benefit our local community – ramps we can take to use in our local parks/ compost areas etc.
- Pupils will be taught how to ride an indoor Skate park, that has a variety of obstacles (equipment provided).
- Our aim would be to increase skill level of sports, raising self-esteem and self-belief.
- Our mentors are experienced youth workers and have great knowledge about extreme sports.

Where is it?:

- Onboard Skate park Sheffield Ltd
Little London Road
Sheffield
S8 0UH





Sheffield Sharks

Multi-media Skills

What does the course cover?

- Desk top publishing
- Video production
- File editing
- Audio production
- Podcasting
- Internet skills
- Photography

What can I expect to do?

The practical sessions will include basketball, badminton and table tennis. You will have the chance to work alongside the staff and players from the Sharks basketball team.

Tuesday: Health Promotion; diet, exercise, lifestyle choices & personal safety

Thursday: Enterprise; planning & design, manufacture and selling a product or service

Re-engagement: Healthy Enterprise Challenge; research, planning, design and produce a health drink to sell at an event. Developing communication and numeracy skills.

You will have the opportunity to develop a wide range of skills in the context of the world of sport and complete City & Guilds L1 Award in Employability Skills.

Where is it?

The John Banner Centre
620 Attercliffe Road
Sheffield
S9 3QS

Activities based at English Institute of Sport.





Catering

What does the course cover?

- Industry basics
- Food Preparation
- Hygiene guidelines & procedures
- Food cooking
- Customer service
- Serving food and drink

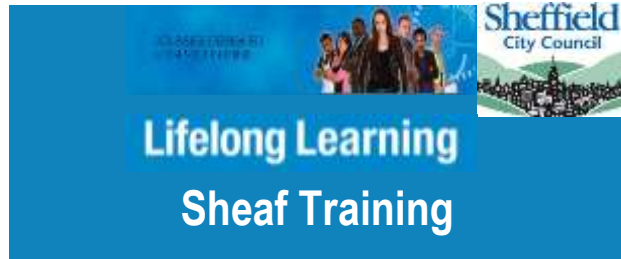
What can I expect to do?

You will complete a portfolio with help from your tutor also you will take part in many practical activities.

Where is it?

Sheaf Training
Roe Wood
Norwood Drive
Sheffield
S5 7BH





Childcare

What does the course cover?

- Personal Development
- Human Growth and development from birth to old age
- Food and Nutrition
- Health and Safety practices in home and group settings
- Care of children
- Play and practical activities
- Employability skills

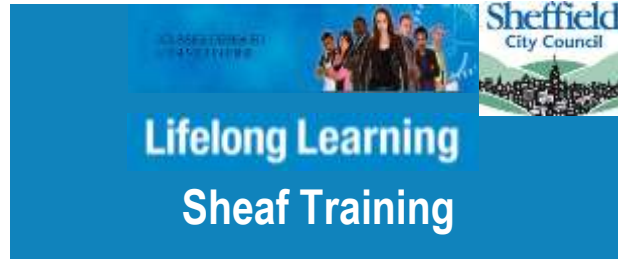
What can I expect to do?

You will be taught in a small group and have the opportunity to develop self-confidence and team working skills.

Where is it?

Sheaf Training
Roe Wood
Norwood Drive
Sheffield
S5 7BH





Horticulture

What does the course cover?

- Preparing ground for seeding and planting
- Applying organic mulch to beds or borders
- Watering plants
- Growing plants in containers
- Tool use
- Hard and soft landscaping

What can I expect to do?

You will be taught in a small group and supported to complete portfolio work.

Practical horticulture lessons will take place outdoors in the extensive well maintained grounds at Sheaf Training.

Where is it?

Sheaf Training
Roe Wood
Norwood Drive
Sheffield
S5 7BH





Everyday inspired

Sports Studies

What does the course cover?

Level 1 Qualification in Sports Leadership and Level 2 Qualification in Sports Leadership. To support these qualifications we can also offer ASDAN Awards in football and leadership.

The qualifications are split up into theory and practical elements, both to be completed to gain the qualification. Learners will also need to deliver coaching sessions to the group (1 hour for level 1 and 10 hours for level 2). These will be fully supported by staff.

As well as the sports element of the programme we work on supporting literacy and numeracy through different activities linked to sport. There are also opportunities to progress on to post 16 courses.

What can I expect to do?

Complete literacy and numeracy tasks. Complete Sports Leaders work book with supporting evidence produced using ICT. Take part and lead practical session, these will be supported by staff. There is also opportunity for learners to volunteer to work on the Community Programme soccer schools during school holidays.

Where is it?

SWFC
Hillsborough Stadium
Sheffield
S6 1SW



beautiful
canvas inc.

- Makeovers
- HD Brows
- Spray Tans
- Semi Permanent Make-up
- Eyelash & Eyebrow Extensions
- Nails

Mobile: 07548 050 419
Tel: 0114 327 0280



Beauty and Make-Up

Syreeta's Make-Up Academy is set in beautiful surroundings on Ecclesall Road. Make-up, Nails, Beauty and basic hair courses are taught at the academy.

All the subjects are enjoyable and creative and provide an insight into the industry.

What does the course cover?

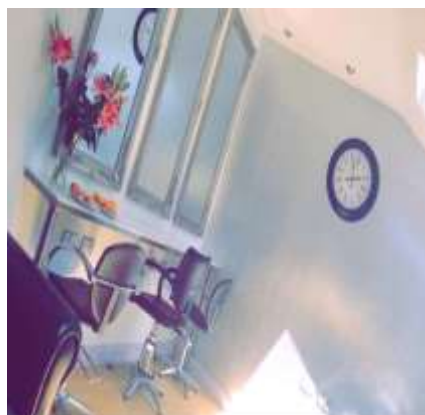
- Beauty
- Basic Hairdressing
- Make- Up
- Nails
- An insight into the beauty industry

What can you expect to do?

- Work with qualified and experienced beauty therapists and make-up artists
- Work and learn in a professional setting
- Practical and theory work
- Work towards AQA Unit Award Scheme to achieve units

Where is it?

546-548 Ecclesall Road
Sheffield
S11 8QA





Personal and Social Development

What does the course cover?

- Awards, Certificates and Diplomas in Employability and Personal Development
- Work experience placements
- Functional Skills English
- Functional Skills Maths
- Music Technology

What can I expect to do?

You will have the opportunity to experience a wide range of activities and develop your team working skills.

Where is it?

SYTG
The John Banner Centre
620 Attercliffe Road
Sheffield
S9 3QS
Tel: 0114 201 5252

Monday to Thursday 9am to 4pm



UNIT 5 @ SYTG

Uniformed Services

What does the course cover?

- Drill
- Service Regulations
- Battle PT
- Foot care
- Map reading
- Interview techniques
- Self-discipline
- Military studies

What can I expect to do?

Unit 5 @ SYTG is a military preparation course for 16, 17 and 18 year olds who would like to prepare for a career in military and uniformed services.

Fitness training sessions run every day, but that is not all you'll be doing. We'll help you improve your Maths and English levels, along with training in the areas listed above.

Monday - Thursday 9.00am –2.30pm

Lunch break of 30 minutes

We run a bursary and free meals scheme for eligible learners.

Where is it?

SYTG
65 Allen Street,
Sheffield ,
S3 7AW

Tel: (0114) 201 5252, Stuart 07799602167 or Sharon 07500903210





Music Production

Interested in a career in music? Why not take advantage of SYTG's professional music studio?

What does the course cover?

- Recording sessions
- Lyric writing
- Mixing
- Making videos

What can I expect to do?

Bigfoot Studio is a professional recording studio with a fully equipped rehearsal room on Allen Street in Sheffield. It was set-up by the co-founders of Sheffield music label Bad Taste Records and is the recording house for a wide range of genres; from Grime to Funk.

Where is it?

SYTG
65 Allen Street,
Sheffield ,
S3 7AW

Tel: (0114) 201 5252, Stuart 07799602167 or Sharon 07500903210



Land-based Studies

What does the course cover?

- Horticulture
 - Animal Care
 - Conservation
- and include:
- Growing vegetables
 - Composting
 - Feeding and cleaning out animals
 - Fence building
 - Tree work

What can I expect to do?

You will be given support to complete your portfolio work and work towards City and Guilds Skills for Working Life Award or a school qualification.

Where is it?

Whirlow Hall Farm Trust
Whirlow Lane
Sheffield
S11 9QF





Personal and Social Development including Childcare

What does the course cover?

- This is a group aimed primarily to support girls, for learners wanting an introductory course in childcare. It is designed to build confidence and self esteem, and will help learners develop an awareness of personal safety and well-being.
- We deliver personal, social, health and economic (PSHE) education, and Personal & Social Development (Childcare module)
- We also deliver functional skills in Maths & English for students attending more than one day per week
-

What can I expect to do?

Learners will work in a small group with 1:1 support to develop a portfolio of work for accreditation. The work is presented in the form of personal challenges and encourages students to develop their personal skills and take responsibility for their own learning.

NOCN Functional Skills in English and Maths is delivered according to their assessed levels. Students will be registered and sit their Functional Skills examinations in Term 3

The course does not require all 3 days

Where is it?

YASY
10a Carver Street
Sheffield
S1 4FS





ESOL (English Speakers of Other Languages)

What does the course cover?

- We work with those who are total beginners to others who may be a bit more advanced with their English.
- We help students develop the four skills of Speaking, Writing, Listening and Reading. The topics and tasks covered are relevant to learners and are related to everyday work, study, community and social situations.
- We deliver mathematics tailored to students' abilities
- To provide a wider curriculum choice for students attending more than one day per week, we deliver Key Steps awards in Personal & Social Development, Citizenship and personal special interest projects

What can I expect to do?

Students will work in small groups with 1:1 support where required. They will build a portfolio of work for accreditation.

Students working at Functional Skills level, will be registered and sit examinations in Term 3

Students will study a varied timetable to help them re-engage and enjoy learning, with a focus on developing their skills numeracy and literacy.

Where is it?

YASY
10a Carver Street
Sheffield
S1 4FS





Introduction to Health, Social Care & Children's and Young People's settings

What does the course cover?

The NOCN Level 1 Award in Introduction to Health, Social Care and Children's and Young People's Settings (QCF) is aimed at and provides a pathway into the sector for, individuals considering a career in health and/or social care. Learners may include anyone considering a career in health and social care that does not already hold a full qualification at Level 1, 2 or 3.

What can I expect to do?

Work in a small group with 1:1 support to develop a portfolio of work for accreditation.

Progression Routes

The units and qualifications will allow learners to gain relevant basic knowledge and understanding of working in the health and social care sector and will provide opportunities for progression on to the L1 Certificate or future Level 2 qualifications.

Times: 9.30am – 3.00pm

Students will need to attend 2 days per week to achieve the full Award.

Where is it?

YASY
10a Carver Street
Sheffield
S1 4FS

