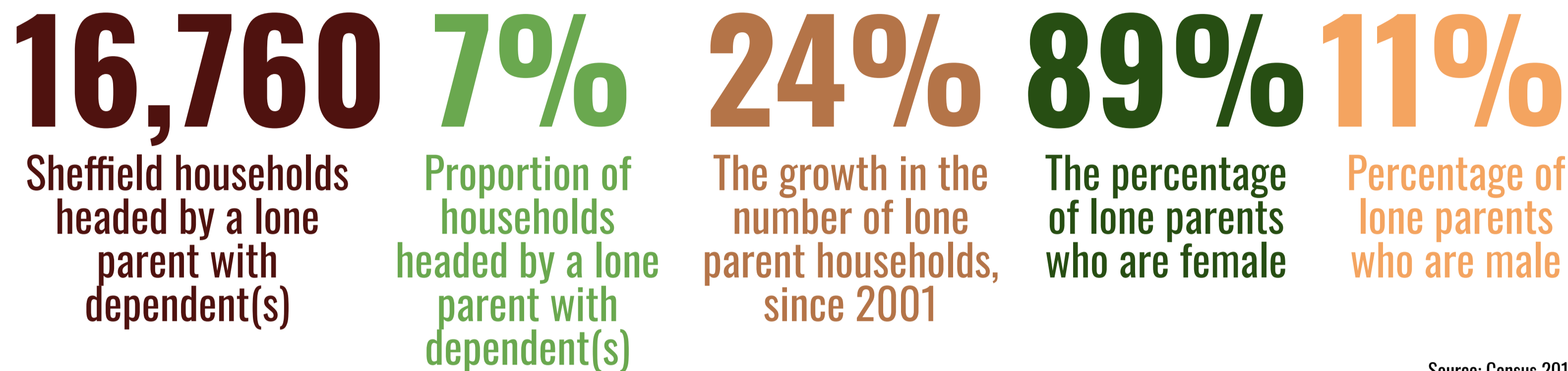


# LONE PARENTS

Updated: Oct 2015  
Checked: Nov 2017

## A lone parent is:

“a parent or guardian with a dependent child under 16 who is not in a co-habiting relationship.”



Source: Census 2011

## THE COST OF BRINGING UP A CHILD

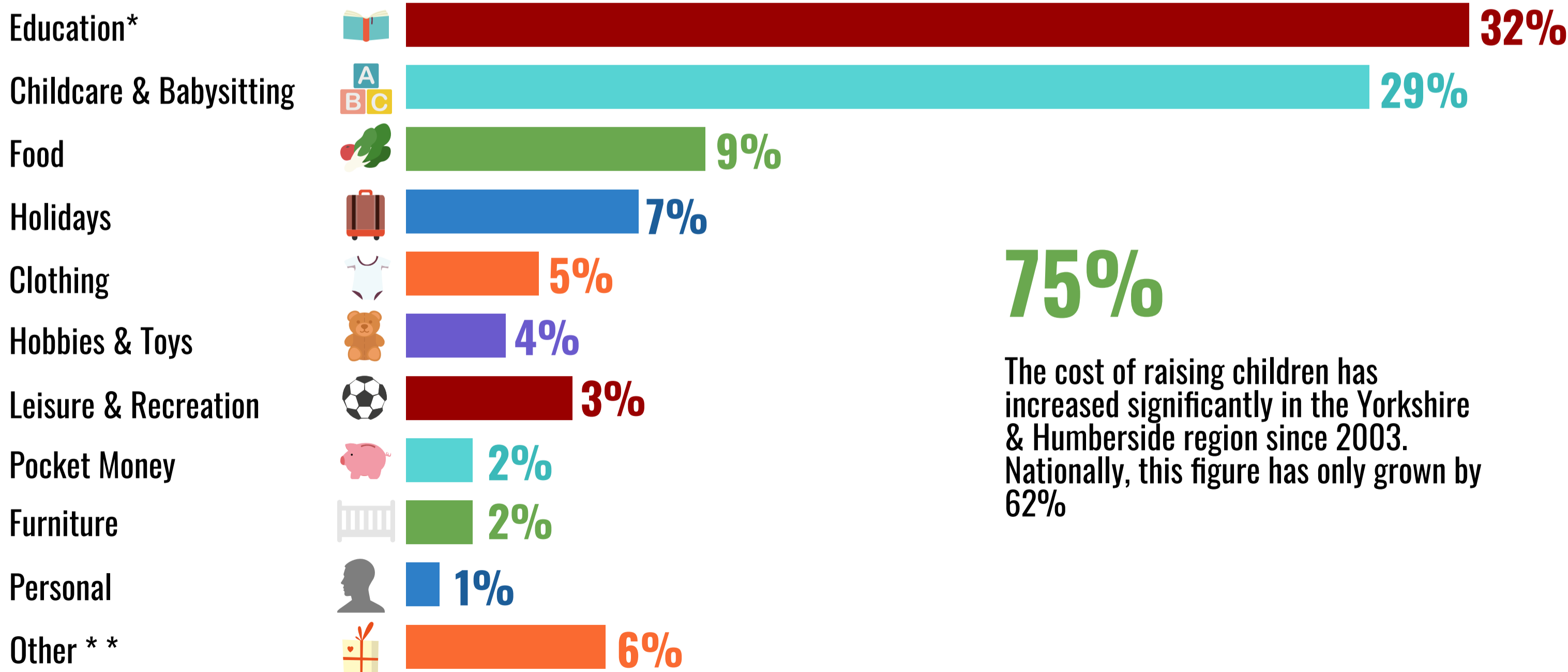
**£182,589**

The average cost of raising a child for lone parents, nationally

The cost of raising a child has increased by 11% for lone parents, since 2002, compared with an 8% rise for couple families

	Couples	Lone Parents
Cost of first child over 18 years	£149,028	£201,767
Average per year	£8,279	£11,209
Average per week	£159	£215

Source: CPAG 2016



\* Includes day to day costs associated with going to school and university fees – not private school costs

\*\* includes driving lessons, first car, birthday and Christmas presents etc.

Source: LV= 2015

This profile is part of a series of profiles about different communities in Sheffield:

[www.sheffield.gov.uk](http://www.sheffield.gov.uk)

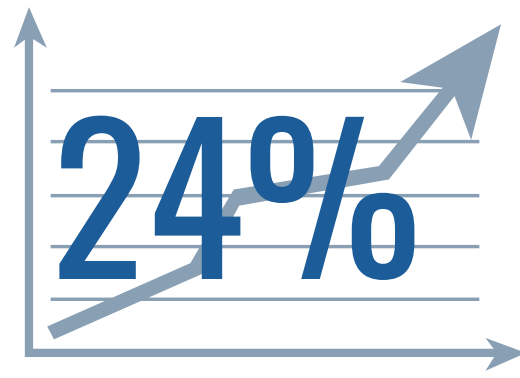
Produced by Performance and Research Team, Sheffield City Council



# DEMOGRAPHICS

**16,760**

7% of Sheffield's households are headed by a lone parent



The number of lone parent households has increased by nearly a quarter since 2001

## GENDER

**89%** of lone parents are female



**11%** of lone parents are male



Source: Census 2011

## POPULATION PROJECTIONS

**22,000**

The number of lone parent households projected in Sheffield by 2021



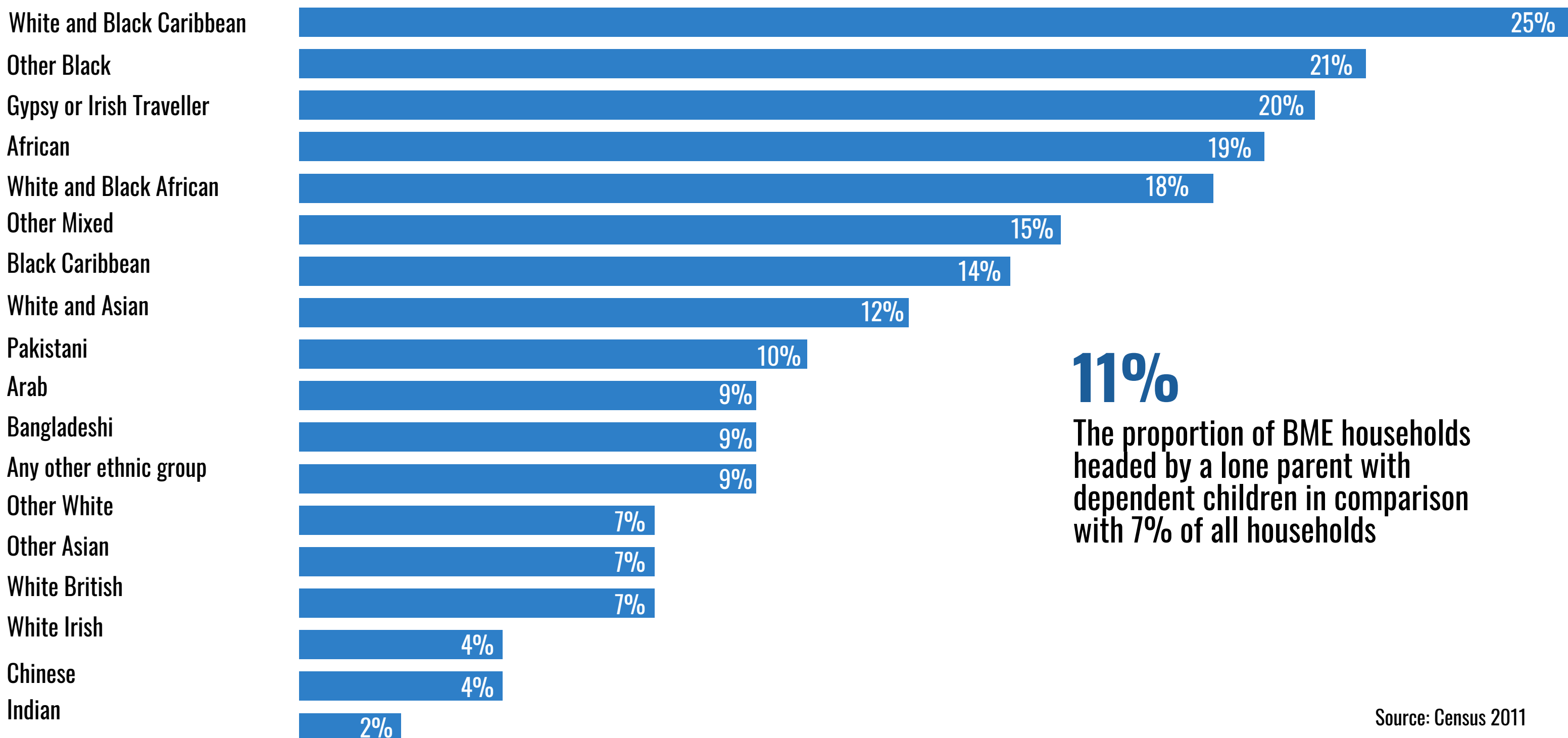
The number of lone parent households will grow by nearly a quarter in the next ten years

**12**

This makes up more than a tenth of the total number of households in the city

Source: Census 2011

## ETHNICITY



**11%**

The proportion of BME households headed by a lone parent with dependent children in comparison with 7% of all households

Source: Census 2011

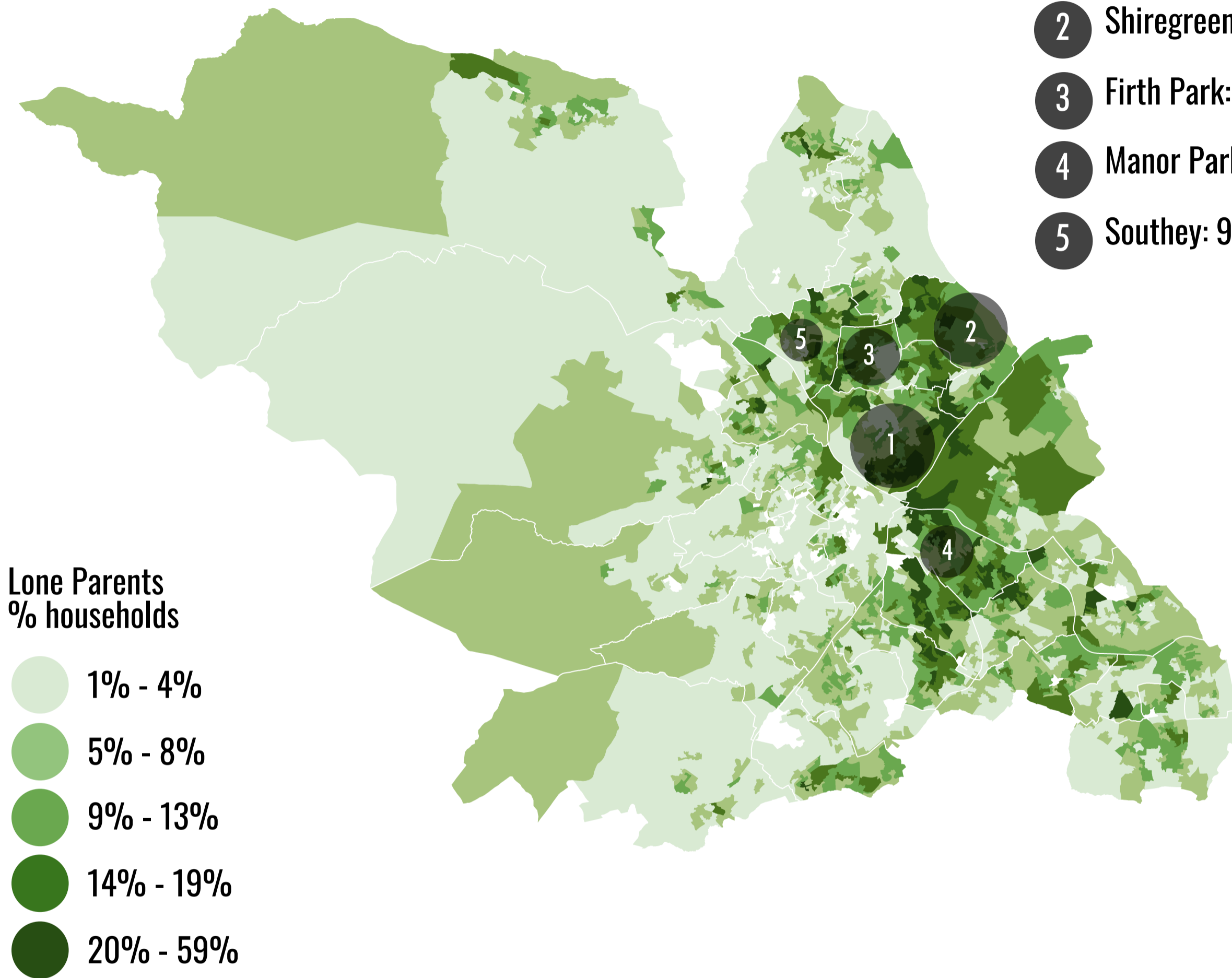
# WHERE DO LONE PARENTS LIVE?

## Lone Parents with Dependent Children in Sheffield

Source: Census 2011

Top 5 Lone Parent ward populations\*:

- 1 Burngreave: 1,197 (8%)
- 2 Shiregreen & Brightside: 1,145 (7%)
- 3 Firth Park: 1,114 (7%)
- 4 Manor Park: 1,139 (7%)
- 5 Southey: 944 (6%)



© Crown copyright and database rights 2015 Ordnance Survey 100018816

# 41%

## Poverty and Deprivation

The percentage of lone parent households with dependent children amongst the 10% most deprived in the country is nearly double the citywide average of 23%.

Source: DCLG 2015



West Ecclesfield, Southey, Arbourthorne, Birley and Firth Park wards have the largest gender gap for lone parents in the city. 92% of lone parents in these wards are female, with only 8% being male



On the other hand, Manor Castle ward has the smallest difference between genders. In this ward, 81% of lone parents are female and 19% are male

Source: Census 2011



# LABOUR MARKET

## ECONOMIC ACTIVITY OF LONE PARENTS

### LONE PARENT FAMILIES



67%

Economically Active

33%

Economically Inactive

### ALL FAMILIES

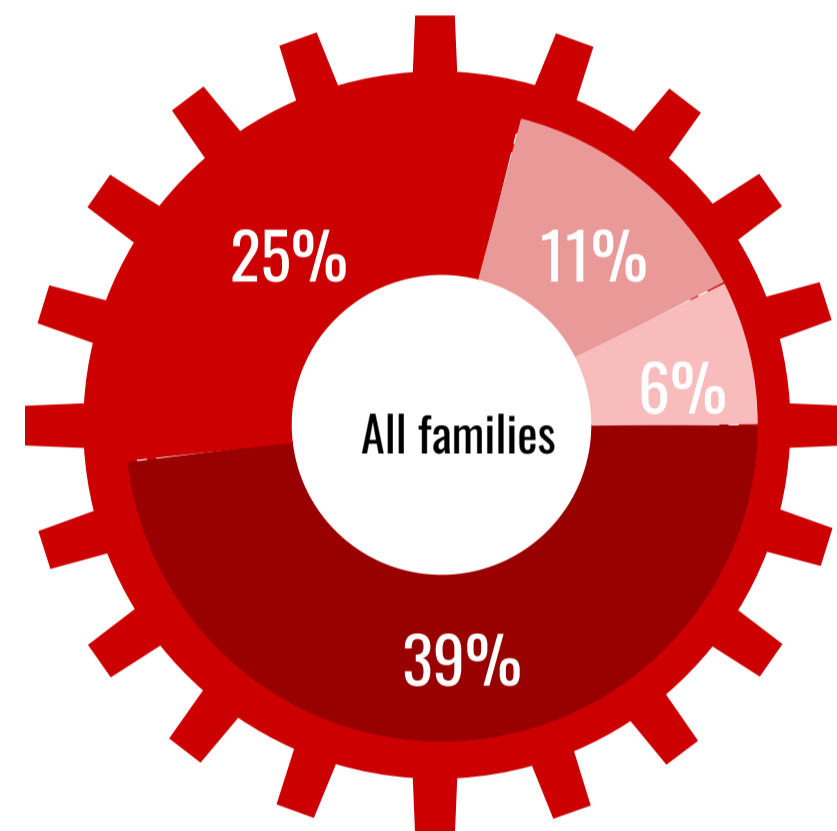
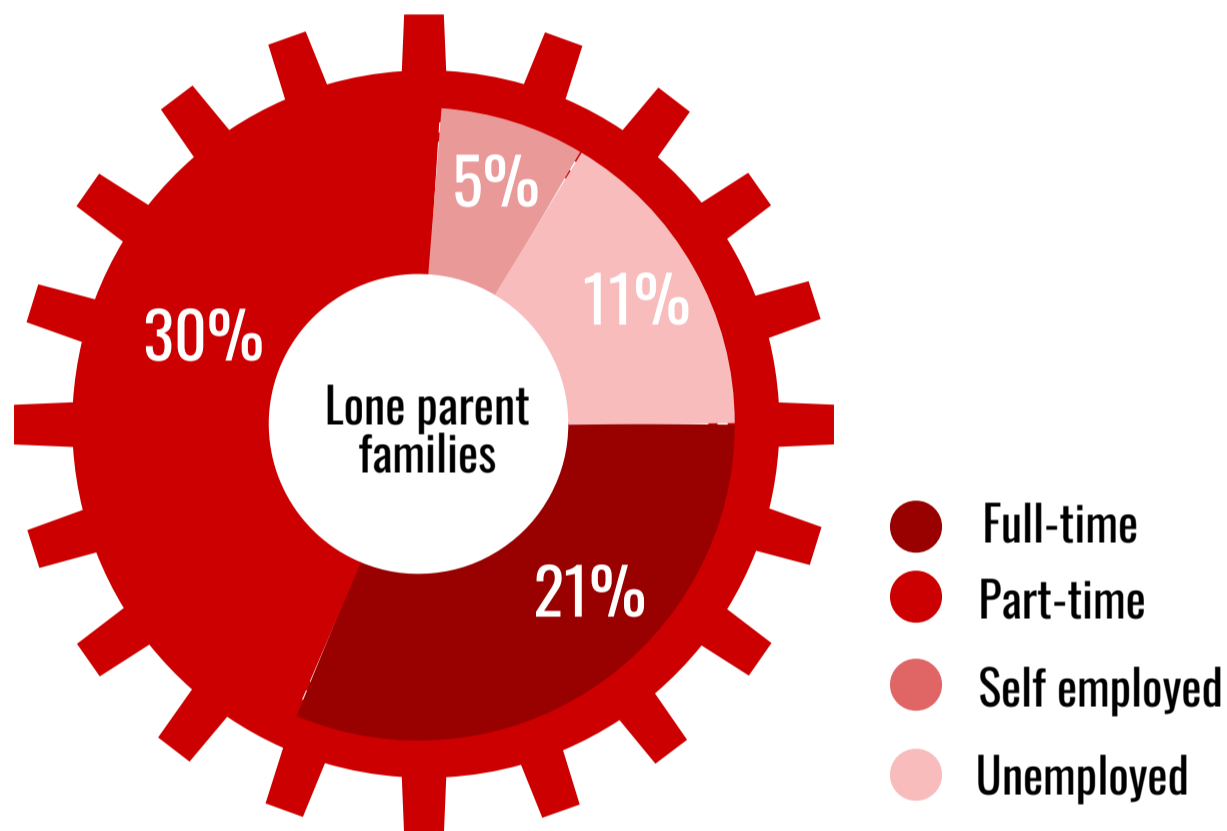


83%

Economically Active

17%

Economically Inactive



### Economically inactive lone parent families (33%)

- 2% Retired
- 3% Student (including full-time students)
- 16% Looking after the home or family
- 7% Long-term sick or disabled
- 4% Other

Source: Census 2011

### DWP Benefits

- 4940 lone parents were claiming DWP benefits in August 2013
- 98% of claimants are female, 2% male
- The number of lone parents claiming benefits has fallen by 36% in the last 10 years, compared with a 6% increase in claimants citywide.

Source: DWP 2013



# POST-16 EDUCATION

29%

The proportion of adults in lone parent families with no formal qualifications is above the citywide average of 23%. This figure is slightly higher (30%) for male lone parents, than for females (28%), although the difference is marginal.

15%

The percentage of adults in lone parent families qualified at level 4 and above, (including Higher Education Certificates and professional diplomas), compared with 27% in Sheffield as a whole.

Source: Census 2011



# HEALTH AND WELLBEING

25%

A quarter of people in lone parent households have a long-term disability or illness

This is below the city average of 35%

This could however be accounted for by the younger age demographic of lone parent households

Source: Census 2011

## MENTAL HEALTH

One of the most significant health issues lone parents face relates to mental health. Research by Scoop Aid, the Sheffield-based advice and support service for lone parents, found 63% of respondents had low level mental health issues for which they were receiving medication.

These issues also affect children in lone parent households. The Centre for Social Justice cited evidence from the British Journal of Psychiatry, stating conditions such as epilepsy, autism and Attention-Deficit Hyperactivity Disorder (ADHD) could be more common in children who had experienced family breakdown.



# ACCESS TO TRANSPORT

48%

Nearly half of all lone parent households do not own a car, compared with only 33% citywide. This is likely to mean a greater reliance on public transport to access services.

## ACCESSING EMPLOYMENT AND SERVICES

Research conducted by the Department for Work and Pensions (DWP) consulted lone parents on barriers to employment opportunities and found that the cost of public transport was of significant concern.

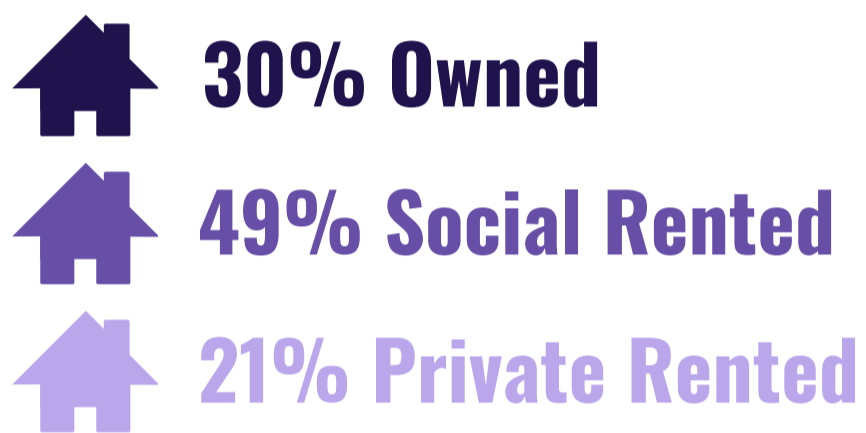
The report suggested that there is a danger many lone parents would be worse off in employment, when combining public transport with other costs like childcare, than they would be if they were in receipt of benefits. This suggests a potential lack of incentive for lone parents to try and access the labour market.

Source: DWP 2013

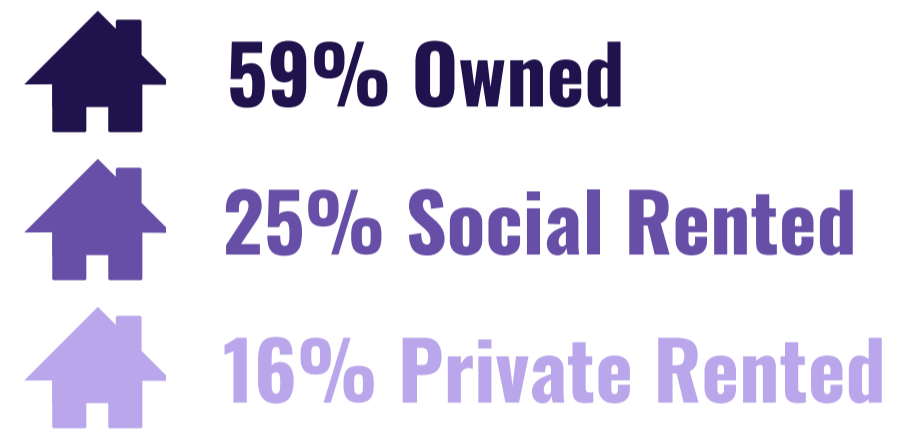
# HOUSING

## TENURE

### Lone Parent Households



### All persons



## OVERCROWDING

12% of Lone Parent households have at least one less bedroom than they require compared with 5% citywide. This is based on the Office of National Statistics [occupancy rating](#).

Source: 2011 Census

## HOMELESSNESS

Homeless applications data shows around 38% of all households found to be eligible for assistance, unintentionally homeless and in priority need were headed by a lone parent with dependent children, compared with 26% of couple households.

Source: DCLG 2015

## COMMUNITY ACTIVITY

A list of organisations, including contact details, is available from the [Sheffield Directory](#) website.

Sheffield Directory is managed by Sheffield City Council. Whilst every effort is made to ensure accuracy, Sheffield City Council cannot accept responsibility for, any errors or omissions. Please note that the inclusion of any group in this report does not mean they have been vetted or recommended by Sheffield City Council.

## SOURCES

Census 2001 – 2011, Office of National Statistics  
Child Poverty Action Group (CPAG) 2016, The cost of a child in 2016  
DCLG 2015, Indices of Deprivation, Department for Communities and Local Government  
DCLG 2015, Homelessness statistics  
DWP 2013, Department for Work and Pensions statistics  
LV= 2015, Cost of a Child - from cradle to college